

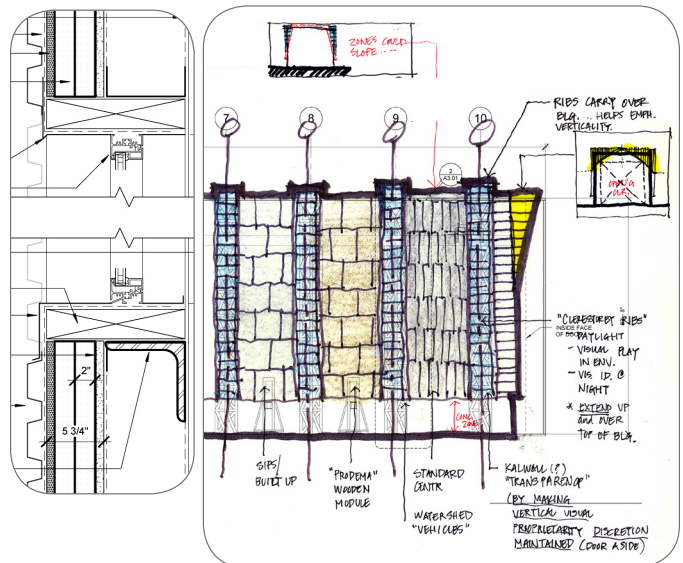
project	<b>CONFIDENTIAL</b>		
location	BOSTON, MA	client	CONFIDENTIAL
architect	Stephen Moore w/ ARCHITERRA	contractor	N/A
project type	ARCHITECTURE, HIGH-PERFORMANCE BUILDING, SUSTAINABLE DESIGN		

sophisticated design approach  
 created high-performing work spaces  
 incorporate passive thermal strategies

# innovation

A state project for a renewable energy testing facility began in late 2008 with a study on site, envelope, and the engineering capacities that the facility would have to encompass. A facility of this scale and complexity had yet to be built in the US, so much of the work was creating a typology from very little precedent.

Stephen Moore led the envelope study that included ways of incorporating a budget-conscious thermal envelope of a very large building volume while also working to incorporate various passive strategies for day-lighting, heating and cooling. The building also was charged with being the symbol for the emerging industry in this country, so the design was to reflect an interesting approach that drew attention while maintaining the proprietary requirements.



[Stephen Moore performed this work while with Architerra]

